



OPTICIAN TO THE STARS

LANARD C. ATKINS, EDO, ABOC, NCEEG

Course Description

Have you ever looked at a tv show, movie or commercial and wondered where the actor got their frames and/or contact lenses from? This course will inform and enlighten ophthalmic professionals on how to utilize spectacle frames and contact lenses for character development for the entertainment and production industry.

CORNEAL OR SCLERAL?

FRAMES & LENSES



**BUILDING YEDEAL
RELATIONSHIPS**

TEAMWORK MAKES THE DREAM
WORK!

**What Does It Take To Build The
YEdeal Relationship?**

- Understanding Human Dynamics
- Effective Communication Strategies
- Building & Sustaining Trust
- Emotional Resilience & Self-Dare
- Cultural Sensitivity & Diversity







MY FIRST SHOW!

CONSTANTINE, NOT THE ONE WITH KEANU REEVES! THIS WAS A TV SHOW.



**WORK STATION
SANTATION**

You can never be too clean, especially when working outside of the dispensary.

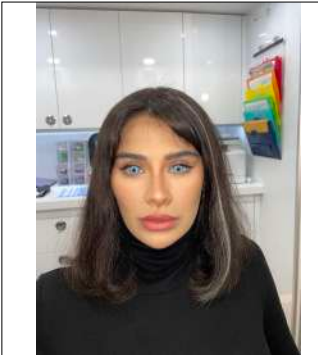


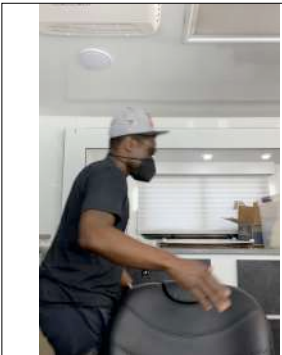


DOOM PATROL

64 DIFFERENT PERSONALITIES!

THIS WAS FUN!





**IF YOU SEE THE
HAT, IT'S ME!**





RAISING DION







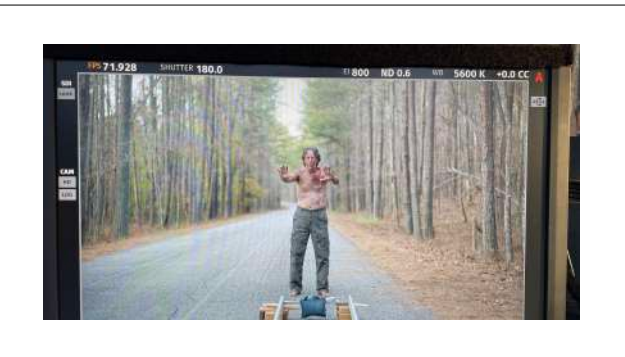
BLACK MAFIA
FAMILY





**TRY WORKING
BLIND**

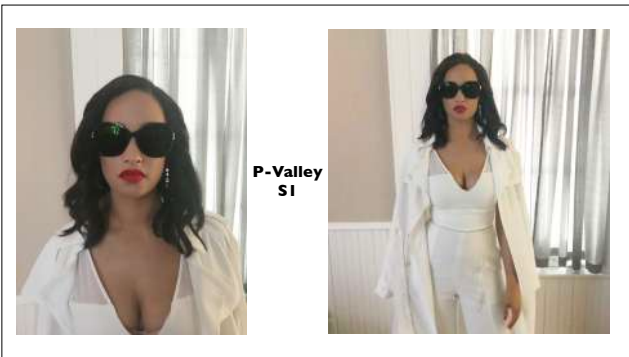
WILL TRENT SI





24MM Diameter

















Can you believe they need opticians to style models for various editorials?



KILLERS OF THE FLOWER MOON

YES, I GOT TO WORK WITH LEONARDO DICAPRIO!



THANK YOU FOR YOUR TIME

THE TIME IS OVER

O A TIME

O A TIME
